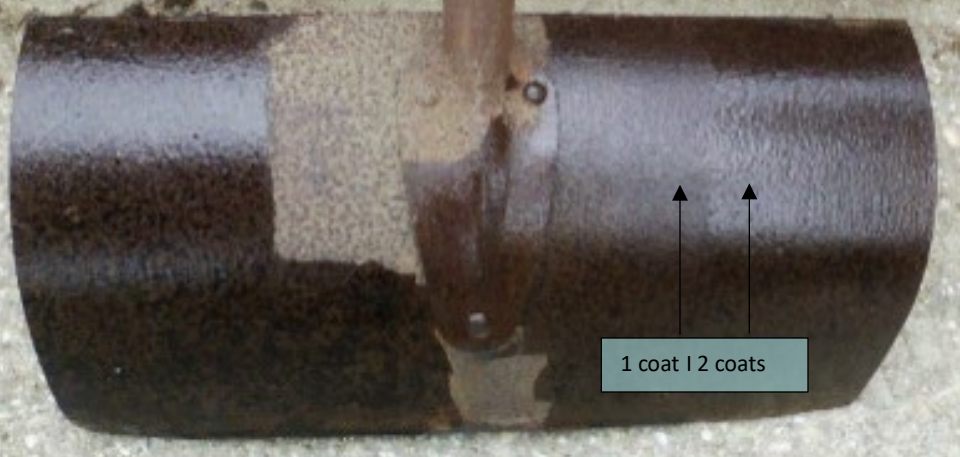


NewEraSOS™
Scientific Optimal Solutions



NewEraSeal™ Rust Kote

Converts rust to an inert, solid waterproof surface

Product Info

NewEraSeal™ Rust Kote converts rust to an inert, solid waterproof surface. Nano-sized metal protectants drive deep through the surface rust into the base metal below. The stabilized surface becomes waterproof and rustproof unless abraded to bare metal. Treated surfaces can be painted with oil, epoxy base paint, or sealed with our hyper-dense, invisible **NewEraSeal™ Fortify Sealer**.

NewEraSeal™ Rust Kote isolates all ferrous and non-ferrous metal surfaces from the air to prevent further rusting or oxidation to provide long-term, tenacious protection superior to any other solvent or water-based rust conversion coating. **NewEraSeal™ Rust Kote** can be painted with oil-based or epoxy paints for complete protection where finished surfaces are desirable.

Features

- Ready to use
- Make surface rust proof
- Make surface waterproof
- Non-flammable
- VOC compliant
- Requires no special ventilation
- Water clean-up
- Use as primer for oil or Epoxy based paint to improve appearance.

Benefits

- Easily applied by brush, deep nap roller, or spray.
- VOC compliant, no special ventilation required.
- Provides long-term protection from rust /oxidation
- Converts rust to a dense inert surface
- Stops rust from progressing until refinishing is scheduled
- May be used as a protective primer
- Surface is waterproof and rust proof

Where to Use

Protects steel and iron, and ferrous metals from rust.

Examples:

- Aluminum
- Zinc
- Lead
- Tin
- Copper
- Nickel
- And non-ferrous metals from corrosion and oxidation.

Protect the undercarriage of vehicles from rusting out.

Application Instructions

- Apply between 50° - 90° F.
- **Do not dilute.** Mix well before use.
- Pour into the container only enough for the job.
- **Do not** return unused material to the original container.
- Apply liberally, careful application will result in a smooth finish.
- On rusted surfaces, the black coating will begin to develop in a few minutes. The uneven color indicates additional coat application is required for the maximum protection; two coats are usually required.
- Apply 2nd coat after 1 to 2 hours.
- For a smoother finish, cosmetic appearance, and longer protection, follow curing with sand-able primer and oil-based or Epoxy paint.
- **Do not sand black coating.**

New Surfaces

- Brush, roll, or spray onto the clean, dry surface.
- Let dry for 8 hours.

Rusted Surfaces

- Wire brush or sand loose scale/rust, brush, roll or spray surface liberally.
- Let dry for 8 hours. Allow 24 hours before repainting

Reaction and Cure Time

- As product dries it will make rusted surface black and smooth.
- If there is no rust present, coating will remain clear, protect from oxidation
- Cure time between coats: 1 to 2 hours
- Treated surface may be sealed or painted after 24 hours "complete cure".

NewEraSeal™ Rust Kote fine dense coat does not impede the threading of the nut to the bolt.

Tips

- One gallon covers up to 250 sq ft
- Blotchy appearance indicates a second coat is necessary
- Two coats are needed for best results
- On large surfaces showing significant flaking of rust, media/sand-blast surface or use other mechanical removal methods.

Warning

Keep out of reach of children. This is an industrial product for use by a person who has knowledge of the product and application. Use eye protection and rubber gloves while working with this product. If eye contact occurs, rinse eyes with plenty of water. If skin contacts, wash with soap and warm water

Quick Specs

- **Size:** 4/1-gal, Pails, Drums, and Totes
- **Appearance:** Milky Brown Liquid
- **Fragrance:** Minimal
- **pH:** Neutral
- **Flash Point:** Same as Water
- **Storage:** Between 40 F and 100 F
- **Stability:** Stable